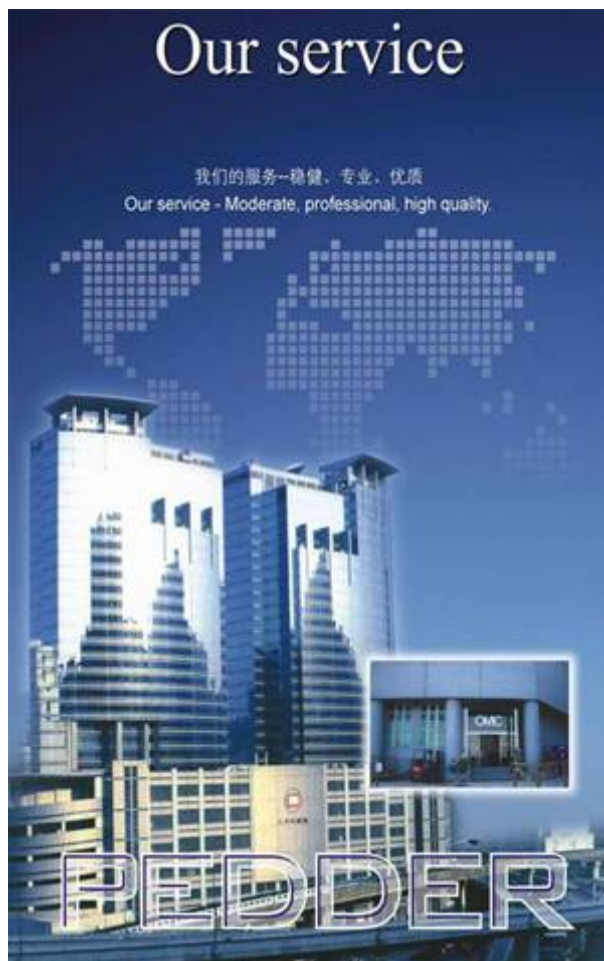




八達倉庫有限公司
PEDDER LOGISTICS GODOWN LIMITED
八達貨運有限公司
PEDDER TRANSPORTATION COMPANY LIMITED

Company Profile



PEDDER LOGISTICS GODOWN LIMITED was established in 1997 and is headquartered in Hong Kong. Mainly, we provide "one stop" integrated services including consolidation (CFS), customs declaration and transportation services in a professional manner between mainland and Hong Kong. We have warehouses in Kwai Chung (EG), Tuen Mun (RTT), Kwai Chung (HLC), Hong Kong, Shenzhen, Guangzhou, Nansha New Port, Guangzhou and large fleet China- Hong Kong transportation team. We own exclusively developed computer management system for consignors or customers control processing and customs declaration by Internet from delivery registration to container loading and export of goods. Our Staffs have received strict professional trainings in shipping operation, import and export clearance, inland transportation and CFS operation. By our hard-working staff, our company has been growing vigorously and developing steadily in this 10 years. Based on our operation principle - "Customer First", our specialized team will provide a **comprehensive, quality and effective CFS service** to our customers continuously.

History

HONGKONG PEDDER LOGISTICS GODOWN LIMITED - established in 1997

SHENZHEN PEDDER LOGISTICS GODOWN LIMITED - established in 2002

GUANGZHOU PEDDER LOGISTICS GODOWN LIMITED - established in 2004

GUANGZHOU PEDDER LOGISTICS GODOWN LIMITED, NANSHA PORT - established in 2007

High-quality services

■ Warehousing services

- Export bonded warehouse;
- Storage;
- Distribution of goods of international procurement group in warehouse;
- Cargo Consolidations

■ Value-added services

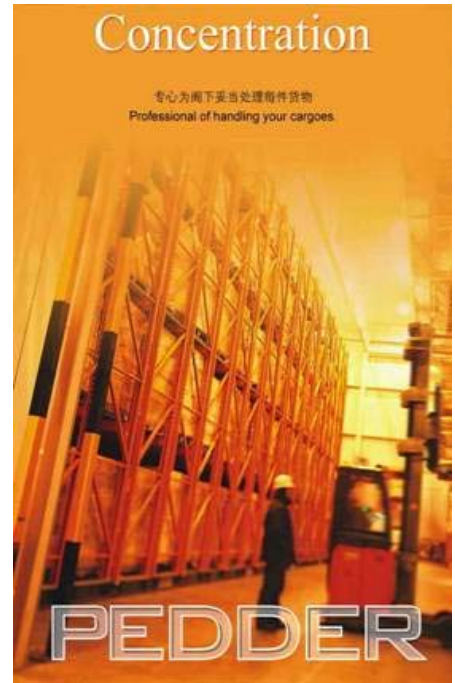
- Labeling;
- Pallet fixing;
- Product Assembly;
- Repackaging;
- Garments on Hangars services;
- Inspection;
- Fumigation.

■ Customers services

- Customs declaration agency;
- Consultation on customs declaration agency;
- Certificate of commodity/quarantine agency.

■ Trailer services

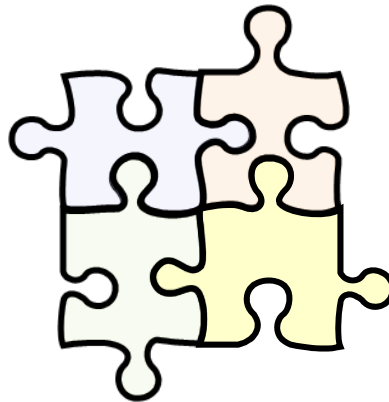
- China-Hong Kong transportation;
- Container pick up and return service from the warehouse to Yantian and Shekou port;
- Transportation from Guangzhou to Shenzhen/Hong Kong.



Thanks for your trustfulness to **PEDDER**. We are honorable to provide the above services based on " **PEDDER** Service Terms and Conditions ".

Management concept

- **Management concept** - Open and Fair, Aggressive and Pragmatic, Flexible and Efficient.
- **Our service** – Comprehensive, Professional, High Quality.
- **Professionalism** – Conscientiousness to every goods.
- **Our Philosophy** - Continuous learning, Creative, Performance working ability.



Professional + Responsibility = Excellent Team

- We have the massive professional team, including Customs declaration specialist, Inspector, Trailer control planner, Shipping specialist, Loading and unloading specialist, Warehouse planner, Financial planner, Accountant , IT engineer.....
- Our key factors of a successful business are wholehearted and responsibility. The responsible person is the constitution harmonious team's cell, the responsible team is the nucleus which the enterprise grows continually; Must succeed, indispensable. We must achieve:
 - wholehearted and responsibility;
 - Be responsible to every workers and pay more attention to team performance and company development;
 - Provide satisfactory services for customers with our professional spirit and skills



PEDDER, Hong Kong

Ever Gain Plaza, Kwai Chung

Add: 6/F, Ever Gain Plaza, No. 88 Container Port Road, Kwai Chung, NT. Hong Kong

Tel: (+852) 29448832

Fax: (+852) 24071116

River Trade Terminal, Tuen Mun

Add: Shed D No.201 Lung Mun Road, Tuen Mun, NT. Hong Kong

Tel: (+852) 26124433

Fax: (+852) 26124489, 26121008

Hutchision Logistics Center, Kwai Chung

Add: 504, Container Port Road, South, Kwai Chung, NT, Hong Kong

Tel: (+852) 29449955

Fax: (+852) 29449977



PEDDER in Hong Kong



FACILITIES in Ever Gain Plaza, Kwai Chung, Hong Kong

Fixed area: 130,000 sq.ft.

Loading and unloading bay: 28

Car park area: 110,000 sq.ft.

Floor height : 8m

Turn over capacity: 70,000t/month

Forklift : 23 sets

Tonnage of forklift: 2--4.5T

Workers for loading and unloading: 40

Warehouse management: fully-close management, 24 hr safety guard.

CCTV system: 24 hrs recording CCTV system inside and outside the warehouse.

Firing control system: automatic fire alarm, automatic fire spraying system.

Computer system : exclusively self-developed warehouse management system, on line goods tracing system



FACILITIES in River Trade Terminal, Tuen Mun, Hong Kong

Fixed area : 68,000 sq.ft.

Loading and unloading bay : 18

Car park area: 35,000 sq.ft.

Floor height : 8.5m

Turn over capacity: 40,000t/month

Forklift: 12 sets

Tonnage of forklift: 2--3T

Workers for loading and unloading: 20

Warehouse management: fully-close management, 24 hr safety guard.

CCTV system: 24 hrs recording CCTV system inside and outside the warehouse.

Firing control system: automatic fire alarm, automatic fire spraying system.

Computer system : exclusively self-developed warehouse management system, on line goods tracing system



FACILITIES in Hutchison Logistics Centre, Kwai Chung, Hong Kong

Fixed area: 38,000 sq.ft.

Loading and unloading bay: 11

Car park area: 10,000 sq.ft.

Floor height : 8m

Turn over capacity: 14,000t/month

Forklift: 6 sets

Tonnage of forklift: 2--3T

Workers for loading and unloading: 10

Warehouse management: fully-close management, 24 hr safety guard.

CCTV system: 24 hrs recording CCTV system inside and outside the warehouse.

Firing control system: automatic fire alarm, automatic fire spraying system.

Computer system : exclusively self-developed warehouse management system, on line goods tracing system



PEDDER, Shenzhen



Add: No. 2 Warehouse, South China International Logistics Centre, Minkang No.1 Road, Longhua, Bao'an District, Shenzhen.

Tel: (0755) 89812990/1

Fax: (0755) 29838130, 89840676

Email: liang@pedder.com.cn

Position: PEDDER Warehouse, Shenzhen is located at South China International Logistics Center, central part of Shenzhen, east side of Melin Starting Station of Meiguan Expressway, and has the distance only 6km to Huanggang border, 25km to Yantian Port and 20km to Shekou Port.

Type of warehouse: export bonded warehouse of customs.

Customs in charge: Meilin Customs. Shenzhen.

Preferential policy: tax refund after goods entry into the warehouse

FACILITIES of PEDDER,Shenzhen

Fixed area : 13,000 sq.m.

Loading and unloading bay : 80

Electric lifting platform : 16 sets

Car park area: 20,000 sq.m.

Floor height of warehouse : 7.5m max 8.5m

Height of loading and unloading bay :1.12m

Turn over capacity : 50,000m³/month

Forklift: 20 sets

Tonnage of forklift: 1.5--3T

Workers for loading and unloading: 50

Warehouse management: fully-close management, 24 hr safety guard.

CCTV system: 24 hrs recording CCTV system inside and outside the warehouse.

Firing control system: automatic fire alarm, automatic fire spraying system.

Computer system: Et-china customs warehouse receipt linking system, exclusively developed warehouse management system, online goods tracing system.



CAMERA -CCTV

PEDDER, Shenzhen (B1)



Heavy-duty Pallet Racking



Warehouse



Goods in warehouse



Electric lifting platform

PEDDER, Shenzhen (B2)



loading and unloading bay (80)



Car park

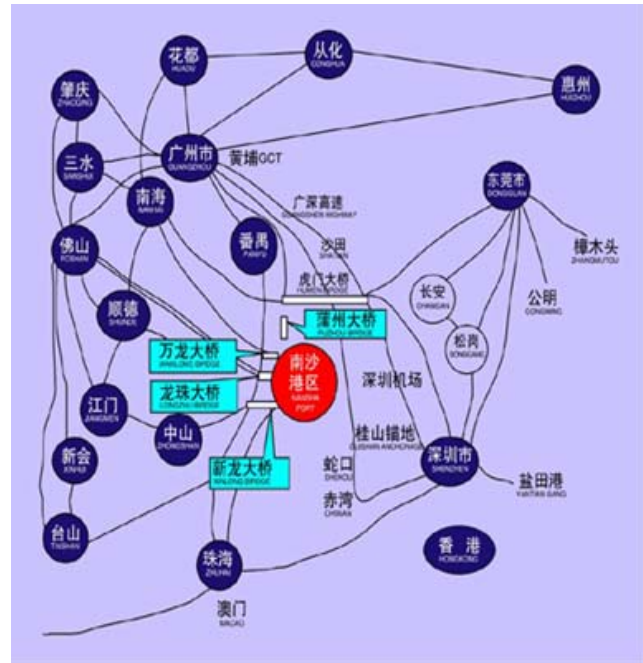


Container yard



**Customs building located
at the warehouse**

PEDDER at Nansha Port, Guangzhou



Add: Haigang Avenue, Longxu Island, Nansha District, Guangzhou

Tel: (020) 34661787

Fax: (020) 34661786

Email: liang@pedder.com.cn

Position:

Nansha is located at geometrical center of Pearl River Delta Economic Zone, and its 60km radius covers 14 large or medium cities such as Guangzhou, Foshan, Shenzhen, Zhuhai, Aomen, Dongguan, Zhongshan and its 100km radius includes the urban network of the whole Pearl River Delta. Nansha is located at the supporting positions of structure "A" of Guangzhou - Hong Kong - Macao in the estuary of Pearl River, and in the key point of connecting city group on the banks of Pearl River's estuary. In accordance with the urban space development layout of Guangzhou "extension southbound and improvement northbound, advance eastbound connecting westbound", extension southbound is the leading strategy for Guangzhou's future development.

Type of warehouse: export bonded warehouse of customs.

Customs in charge: Fangyu Customs, Guangzhou.

PEDDER at Nansha Port, Guangzhou



Appearance of warehouse



Appearance of warehouse



Office block of Customs



Second stage design drawing

PEDDER Changtong, Guangzhou



Add: Room 205, Building 4, Changtong Warehouse, Jiaoxin Port, Shijing Town, Baiyun District, Guangzhou

Tel: (020) 87108854, 87108856

Fax: (020) 36416781

Email: liang@pedder.com.cn

Type of warehouse: vehicle yarn under customs supervision.

Customs in charge: Guangzhou customs. Guangzhou.

Professional CFS services



- Goods receiving checking;
- Quantity in container control;
- Measure and weighing of goods;
- Check shipping marks, PO No., ITEM No. and Classification;
- Inspection of external package;
- Taking damage record;
- Take photo with Damaged goods;
- Loading and unloading by forklift;
- Palleting, scanning, shipping mark sticking;
- Check container No. S/O, and seal No.;
- Storage management .

Perfect loading and unloading solution

We are conscientiousness to every goods, and we take extra care for your goods at any time - loading, unloading and storage each detail.

High-quality loading and unloading team, strict process management, ensure

“ DAMAGE 0 , ERROR 0 , COMPLIANT 0 ”



Value added & QC services in warehouse



Assembling production line



Assembling production line



Quality control (QC)



Finished products

Garment on hanging service (GOH)

PEDDER formally provides garment on hanging service upon customer's request. Our warehousing commissioners will comply with the strict garment hanging standard. They have passed professional training and experienced from receipt, arrangement, hanging till container seal to ensure the specifications of garments at the destination.



Garment on hanging device installed on container



Value-added service (A)



Palleting service

Provide:

- Plastic pallet
- Pallets with exemption of fumigation
- Wooden pallet
- Wrap plastic film
- Adhesive tape

Labelling\shipping mark sticking

Change of internal and external package\QC



Value-added service (B)



Make Wooden Case



Reinforce External Package



- Professional consultation on clearance;
- Preparation of import and export declaration documents;
- Customs declaration commodity inspection and quarantine agency
- Taxation under agency;
- Shorten clearance time, reduce transportation time;
- Efficiency, and quick response to market demand.

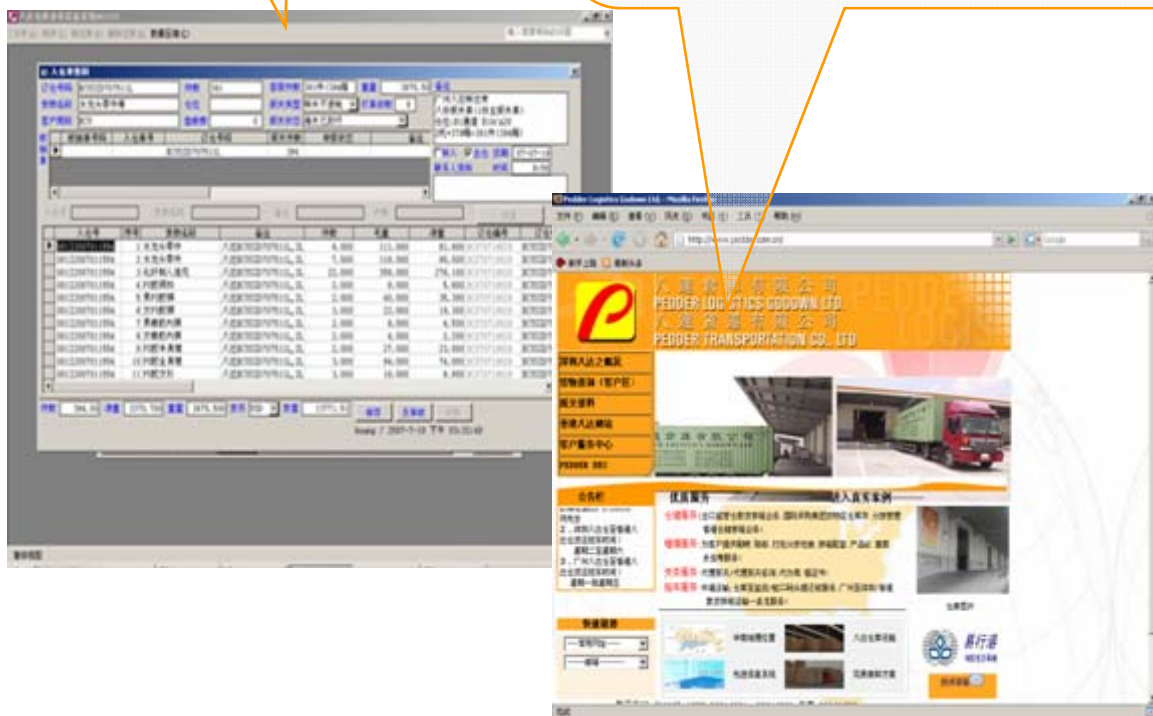
**Credibility + Criterion + Professional
= Safe and Quick Clearance**



Warehouse management system WMS (A)

Warehouse and customs system realizes data exchange through EDI to ensure fast, safe and accurate clearance of incoming and outgoing goods

You can get information - delivery inventory ,clearance of goods and indoors through internet

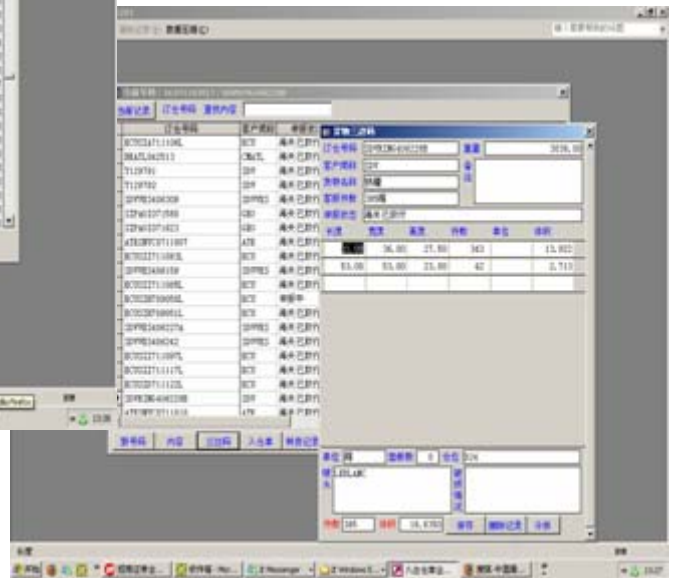


Warehouse management system WMS (B)

PEDDER warehouse management system

Includes several modules:

- Incoming Information
- Outgoing Management
- Inventory Control
- Document Control,
- Clearance Management
- Verification Sheet Management
- Goods Transfer in the same industry
- Customs' EDI data Introducing Module...



Complete and accurate warehouse statement



Inventory											
DATE: 2007-11-28											
Item Number	Invoice	Date In	Description	PCS per CTN	PCS	Cartons	CBM	Declaration Status	Hold reas on	Hold Qty	Supplier Name
TS-0118-004		27-Nov	ACYLIC CALCULATOR	200	10000	50	2.033				BEST TIME
TS-0118-009		27-Nov	ACYLIC CALCULATOR	200	5000	25	1.060				BEST TIME
TS-0061-005		27-Nov	LOCK KEYHOLDER	250	4000	16	0.178				MASTERWIN
TS-0099-009		26-Nov	LEATHER BOOK COVER	200	14800	74	3.676				UNIWORKS
TS-0099-009		26-Nov	LEATHER BOOK COVER	200	13070	1	0.050	EXTRA SPARE			UNIWORKS
TS-0218-009		22-Nov	4 WAY CLOCK	120	5760	48	1.273				TONZEX
TS-0218-009		22-Nov	4 WAY CLOCK	29	29	1	0.027				TONZEX
TS-0218-044		22-Nov	4 WAY CLOCK	120	5640	47	1.246				TONZEX
TS-0218-044		22-Nov	4 WAY CLOCK	34	34	1	0.027				TONZEX
TM-0020-001		20-Nov	COOL MIRROR L WITH LAME	80	3200	40	0.699				CHAK YUEN
TM-0028-044		20-Nov	FROST SQUARE MIRROR M	160	8000	50	1.044				CHAK YUEN
TR-0119-009		19-Nov	MAKE PORCH	48	4560	95	6.407				SZ HENREE
TR-0120-009		19-Nov	DOUBLE USE PORCH	60	2280	38	2.408				SZ HENREE
TR-0133-009		19-Nov	SHOE CASE	100	2000	20	1.944				SZ HENREE
TS-0210-009		19-Nov	MOBILE CASE (M)	100	5000	50	2.898				SZ HENREE
TS-0106-003		19-Nov	LEATHER WIDE CARD CASE CROSS	120	1440	12	0.451				UNIWORKS
TS-0227-009		19-Nov	LEATHER BOOK COVER W/MARK	200	2000	10	0.484				UNIWORKS
TS-0235-009		19-Nov	LEATHER BOOK COVER MAT	200	2000	10	0.240				UNIWORKS
TK-0046-004		19-Nov	ROUND SUPPLEMENT CASE (7)	600	19800	33	3.117				CHAN DYNASTY
TS-0199-030		12-Nov	LEATHER PEARL EYE MIRROR	600	4800	8	0.302				UNIWORKS
TS-0203-030		29-Oct	LEATHER PEARL ROUND MIRROR	200	1600	8	0.239				UNIWORKS
TS-0200-009		29-Oct	LEATHER KEY CASE CROSS	100	3000	30	0.784				UNIWORKS
TS-0318-009		22-Oct	LEATHER FASTENER DVD CASE	60	2040	34	3.342				UNIWORKS
TS-0318-044		22-Oct	LEATHER FASTENER DVD CASE	60	2040	34	3.342				UNIWORKS
TS-0172-011		15-Oct	MOBILE STAND	50	3000	60	3.830				MASTERWIN

Inventory												
DATE: 2007-11-28												
CUSTOMER	NO.	S/O NO	CTN NO	P/O.	Item Number	Invoice	Date In	Description	PCS per CTN	PCS	Cartons	CBM
	1	BST0711001	1-30	TW07-138-1(2007 11)	TS-0118-004		27-Nov	ACYLIC CALCULATOR	200	10000	50	2.033
	2	BST0711001	1-25	TW07-138-1(2007 11)	TS-0118-009		27-Nov	ACYLIC CALCULATOR	200	5000	25	1.060
	3	MSW0710002	84-100	TW07-100(2007 11)	TS-0061-005		27-Nov	LOCK KEYHOLDER	250	4000	16	0.178
	4	UN0711004	501-574	TW07-175(2007 11)	TS-0099-009		26-Nov	LEATHER BOOK COVER	200	14800	74	3.676
	5	UN0711004	575	TW07-175(2007 11)	TS-0099-009		26-Nov	LEATHER BOOK COVER	200	13070	1	0.050
	6	TX0711001	1-48	TW07-109(2007 11)	TS-0218-009		22-Nov	4 WAY CLOCK	120	5760	48	1.273
	7	TX0711001	49	TW07-109(2007 11)	TS-0218-009		22-Nov	4 WAY CLOCK	29	29	1	0.027
	8	TX0711001	50-96	TW07-109(2007 11)	TS-0218-044		22-Nov	4 WAY CLOCK	120	5640	47	1.246
	9	TX0711001	97	TW07-109(2007 11)	TS-0218-044		22-Nov	4 WAY CLOCK	34	34	1	0.027
	10	CY0711001	25-64	TW07-125(2007 11)	TM-0020-001		20-Nov	COOL MIRROR L WITH LAME	80	3200	40	0.699
	11	CY0711001	50-99	TW07-127(2007 11)	TM-0028-044		20-Nov	FROST SQUARE MIRROR M	160	8000	50	1.044
	12	SZ0711001	105-199	TW07-090(2007 11)	TR-0119-009		19-Nov	MAKE PORCH	48	4560	95	6.407
	13	SZ0711001	42-79	TW07-091(2007 11)	TR-0120-009		19-Nov	DOUBLE USE PORCH	60	2280	38	2.408
	14	SZ0711001	30-49	TW07-093(2007 11)	TR-0133-009		19-Nov	SHOE CASE	100	2000	20	1.944
	15	SZ0711001	50-99	TW07-094(2007 11)	TR-0210-009		19-Nov	MOBILE CASE (M)	100	5000	50	2.898
	16	UN0711003	1013-1024	TW07-116(2007 11)	TS-0106-003		19-Nov	LEATHER WIDE CARD CASE CROSS	120	1440	12	0.451
	17	UN0711003	3210-3219	TW07-119(2007 11)	TS-0227-009		19-Nov	LEATHER BOOK COVER W/MARK	200	2000	10	0.484
	18	UN0711003	535-544	TW07-121(2007 11)	TS-0235-009		19-Nov	LEATHER BOOK COVER MAT	200	2000	10	0.240
	19	CDY0711001	78-110	TW07-107(2007 11)	TK-0046-004		19-Nov	ROUND SUPPLEMENT CASE (7)	600	19800	33	3.117
	20	UN0711002	2706-2713	TW07-118(2007 11)	TS-0199-030		12-Nov	LEATHER PEARL EYE MIRROR	600	4800	8	0.302
	21	UN0710003	907-914	TW07-103(2007 10)	TS-0203-030		29-Oct	LEATHER PEARL ROUND MIRROR	200	1600	8	0.239
	22	UN0710003	2920-2949	TW07-104(2007 10)	TS-0200-009		29-Oct	LEATHER KEY CASE CROSS	100	3000	30	0.784
	23	UN0710002	6016-6049	TW07-082(2007 10)	TS-0318-009		22-Oct	LEATHER FASTENER DVD CASE	60	2040	34	3.342
	24	UN0710002	6066-6099	TW07-082(2007 10)	TS-0318-044		22-Oct	LEATHER FASTENER DVD CASE	60	2040	34	3.342
	25	MSW0710001	241-300	TW07-076(2007 10)	TS-0172-011		15-Oct	MOBILE STAND	50	3000	60	3.830
	26	SZA0710002	B21-39	TW07-06(2007 10)	TS-0301-002		15-Oct	PLAIN STRAP KEY HOLDER	500	9500	19	0.593
	27	SZA0710002	B40	TW07-064(2007 10)	TS-0301-002		15-Oct	PLAIN STRAP KEY HOLDER	500	450	1	0.031

PEDDER Transportation Team



Pedder provides high-quality integrated services for warehousing and transportation on basis of its large transportation team and advanced management.

Transportation equipment	Quantity
Heavy-duty Truck (China<->Hong Kong)	43 sets
Container Trailers	80 sets
Trucks	10 sets
Heavy-duty Truck (China)	15 sets

Trailer service

PEDDER Warehouse to:

- Yantian Port, Shenzhen
- Shekou Port, Shenzhen
- Nansha Port, Guangzhou
- Modern Terminal, Hong Kong
- All Export Exit



Our clients includes:

- global top 100 logistics enterprises;
- Famous logistics enterprises in China, Hong Kong and Taiwan;
- ocean and air freight forwarding companies; Foreign procurement groups

Goods transfer and transportation services between warehouses

- Guangzhou - Shenzhen
- Guangzhou - Hong Kong
- Shenzhen - Hong Kong
- Guangzhou - Shenzhen - Hong Kong
- Other customs supervision warehouses (Yantian, Sungang)

Advantages :

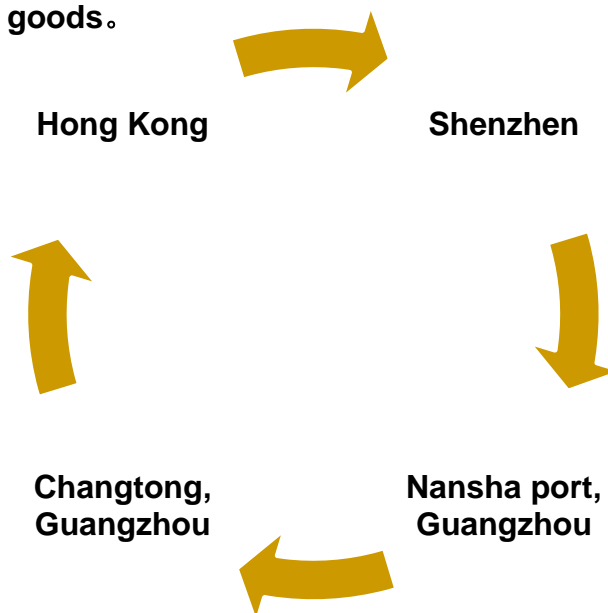
- 1.Daily transportation service ,operation is flexible;
- 2.Charges in unit of cubic meter, easy handle for the costs control;
- 3.CFS is convenient;
- 4.Simple and efficient for delivery at domestic warehouse and picking up of goods at Hong Kong warehouse

PEDDER provides " Quick, Efficient, Low Cost, Flexible "

China – Hong Kong

Guangzhou - Shenzhen

Regular vehicle service for bulk goods.



Operation cases

Case 1:

A Freight Forwarding Company ,(Client A) arranged Shenzhen Huaming Electronic Incoming Materials Processing Plant to send 200 cartons of "electronic clock" and customs declaration manual with 5T vehicle to PEDDER South China Warehouse, Shenzhen on July 28, and the warehouse gave Client A timely feedback on goods receipt and customs declaration after unloading and verification. On July 29, arranged another factory "Dongguan Chuangfa Electronic Plant to send 428 cartons of "electronic watch" with customs supervision vehicle in manner of customs transfer from Fenggang to PEDDER South China Warehouse, and the warehouse cut the seal and checked, then gave Client A timely feedback on goods receipt and customs declaration. The total quantity placed into warehouse was 69 Cbm. On July 30, Client A arranged 40HQ container to load goods in the warehouse, completed loading at 11:00 am, sealed on the site of customs at 11:30 am, left the warehouse at 11:35 am and arrived at Yantian Port for returning loaded containers at 12:35 pm.

Case 2:

Hong Kong Freight Forwarding Company (Client B) had 50 CBM of goods in Hong Kong warehouse to be transported to USA, and another batch of goods 8 CBM in Huizhou City, Guangdong Province. On 9:00 am Sept.1, Client B requested our Company to arrange vehicles to pick up goods on the site. We sent vehicles at 9:30am, arrived at the plant in Huizhou at 11:00 am, completed goods loading and collected full declaration documents at 11:30am, arrived at PEDDER South China warehouse Shenzhen at 14:00 pm, unloaded the goods at 15:00 pm and declared in Melin Customs at 16:00 pm. On 15:00 pm Sept. 2, the goods arrived at PEDDER Warehouse, Hong Kong after groupage through China-Hong Kong transportation of our company, and 40GP container was arranged for groupage of two batches of goods in Hong Kong at 19:00 pm and returned to Kwai Chung Port at 20:30 pm.

Case 3:

The client, a procurement group company of USA, arrange the manufacturers in Guangzhou and Jiangmen on Sept. 18 to send two batches of goods totally 1050 CBM of toys to PEDDER South China warehouse. Shenzhen These two batches of goods have several POs and ITEMS , and the client required to make groupage in different containers according to different PO and ITEM and transported to goods receivers in Britain, Poland and USA. Some goods should be labeled, made pallet and stored for 2 months in the warehouse. Upon client's request, the warehouse delivered 5 pieces of 40HQ to Yantian Port on Sept. 19, 3 pieces of 40HQ TO Shekou Port on Sept. 20 respectively. On Oct. 10, the warehouse arrange 3T customs supervision vehicles to send 10 cartons of goods in manner of customs transfer to Guangzhou Baiyun Airport for airfreight to New York due to urgent demand of goods sample by the USA client. The goods completed value-added services in the warehouse were fully arranged for delivering 7 pieces of 40HQ to Modern Terminal, Hong Kong and Yantian Port Shenzhen on Nov. 15, and the order was smoothly completed.

Schematic chart for groupage

